



Creating a Learning Health and Social System in Newfoundland and Labrador

K. Mahoney, R. Wilson

April 16th, 2024

Quality of Care NL is proud to partner
with **Choosing Wisely Canada**



Presenter Disclosure

- No Disclosures or COI

Healthcare Challenges



An aging population

More people with multi-morbidity

An expectation and ability to provide more interventions

Rising cost of care

Increasing digitization but not necessarily full compatibility, integration and co-ordination

Complex care systems

Many faceted provider groups

Lack of information about what is working well versus not

Healthcare system in NL



Health Crisis

Substantial demographic change

Sustainability of the current model of health care

Fiscal crisis

Climate Change

Health Accord NL



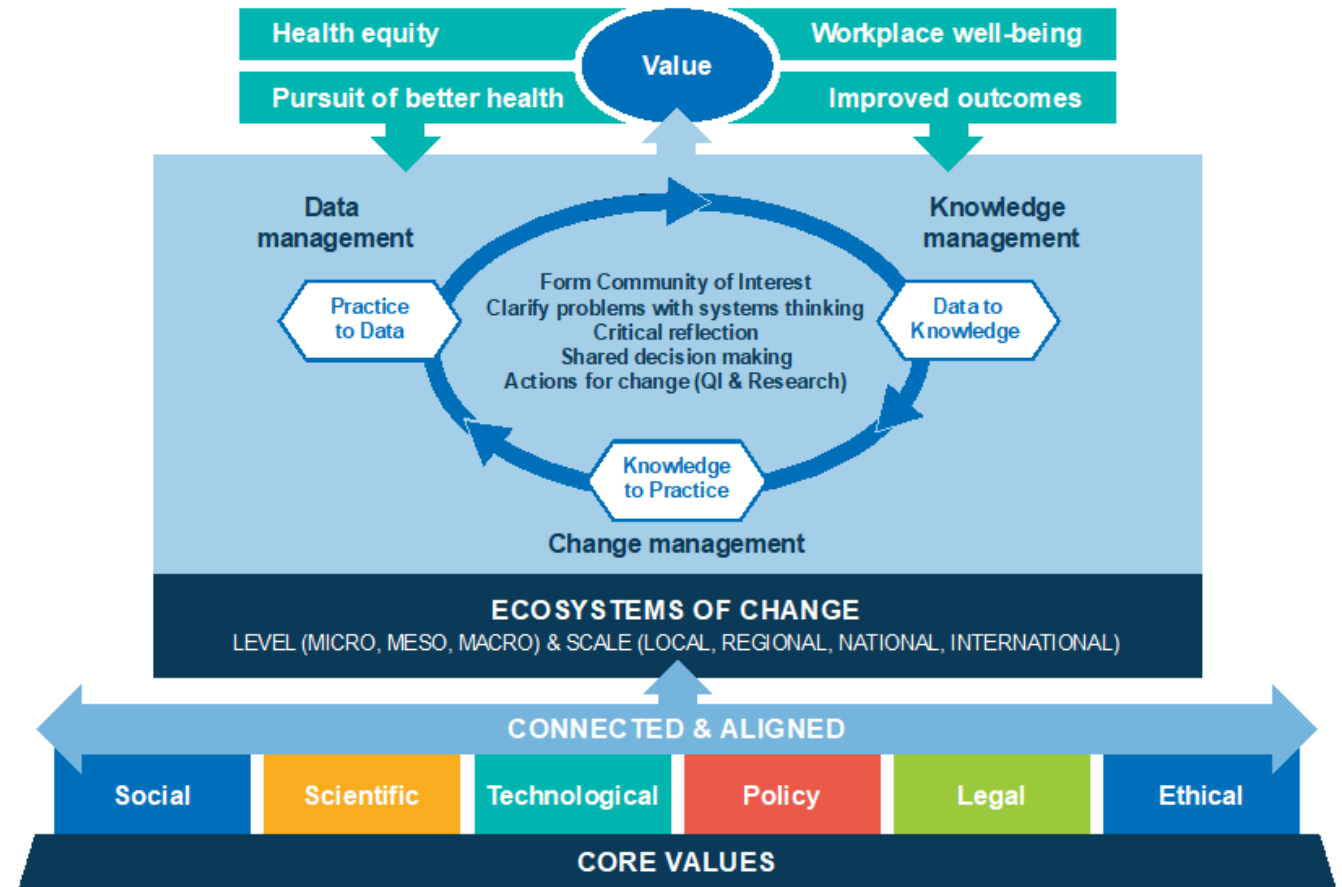
Learning Health System



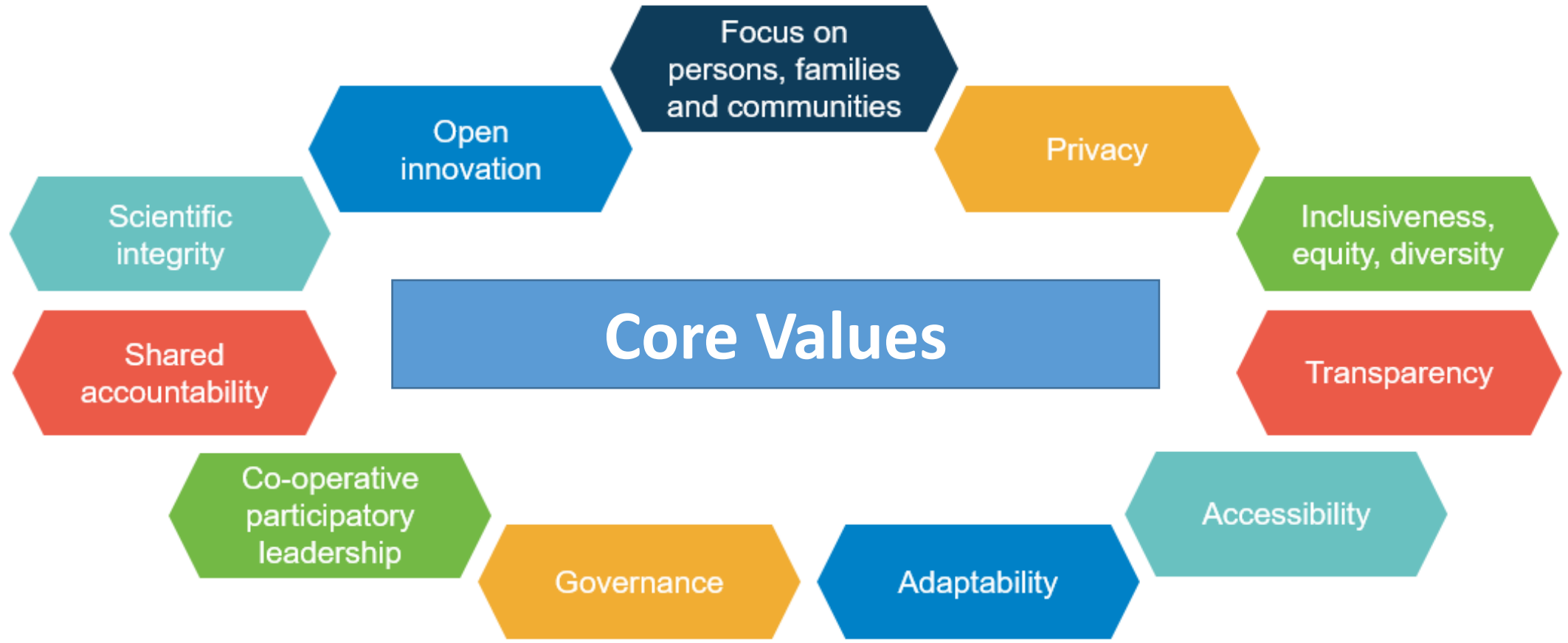
Outcomes- Quintuple Aim

Process-Learning Cycles

Foundation



LHS Core Values



Learning Community



Practitioners

Policy maker

Educators

Decision
makers

Health care
administrators

Community
leaders

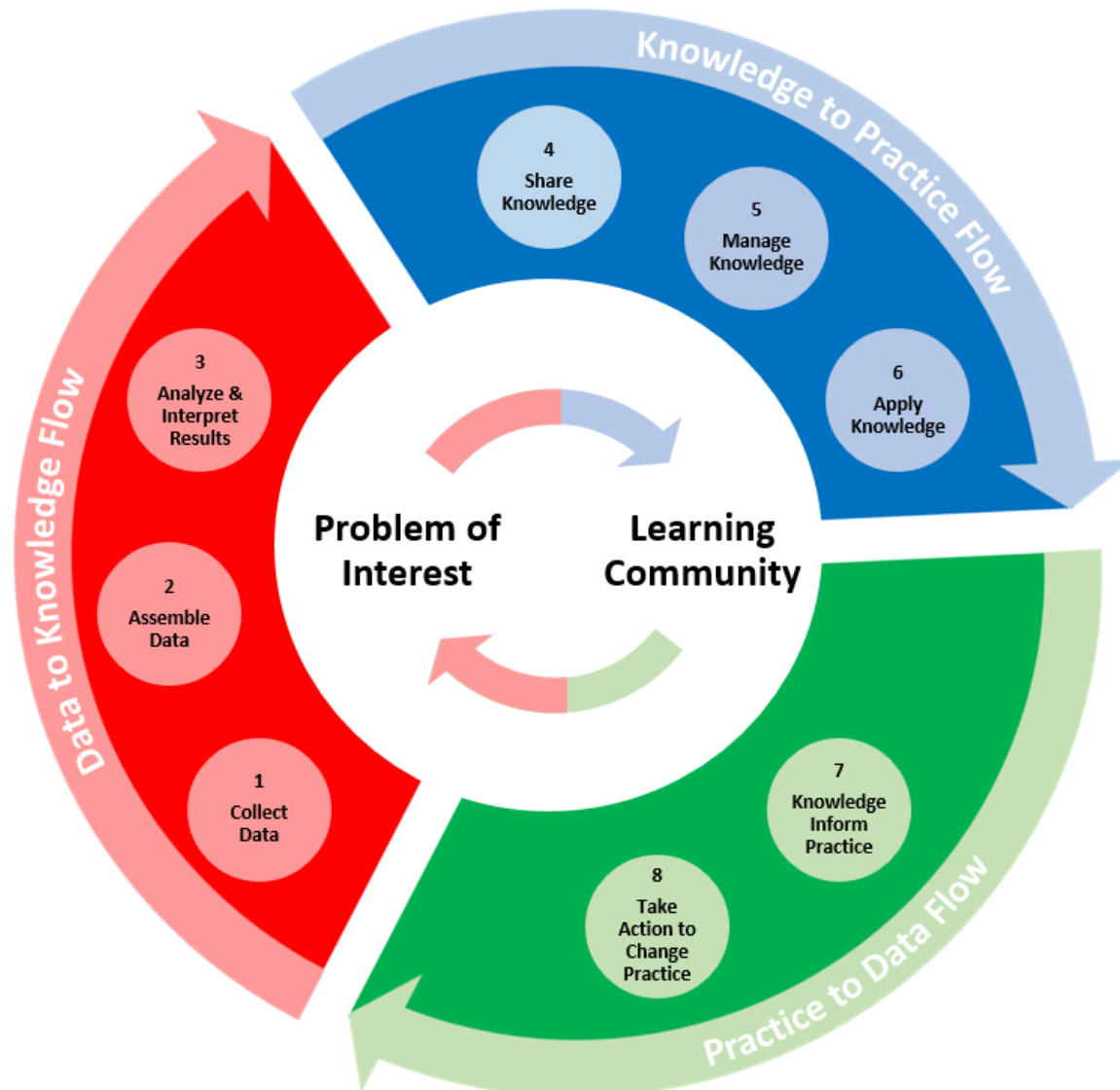
Individuals in
a health
charity

Patient groups

Private sector
organizations

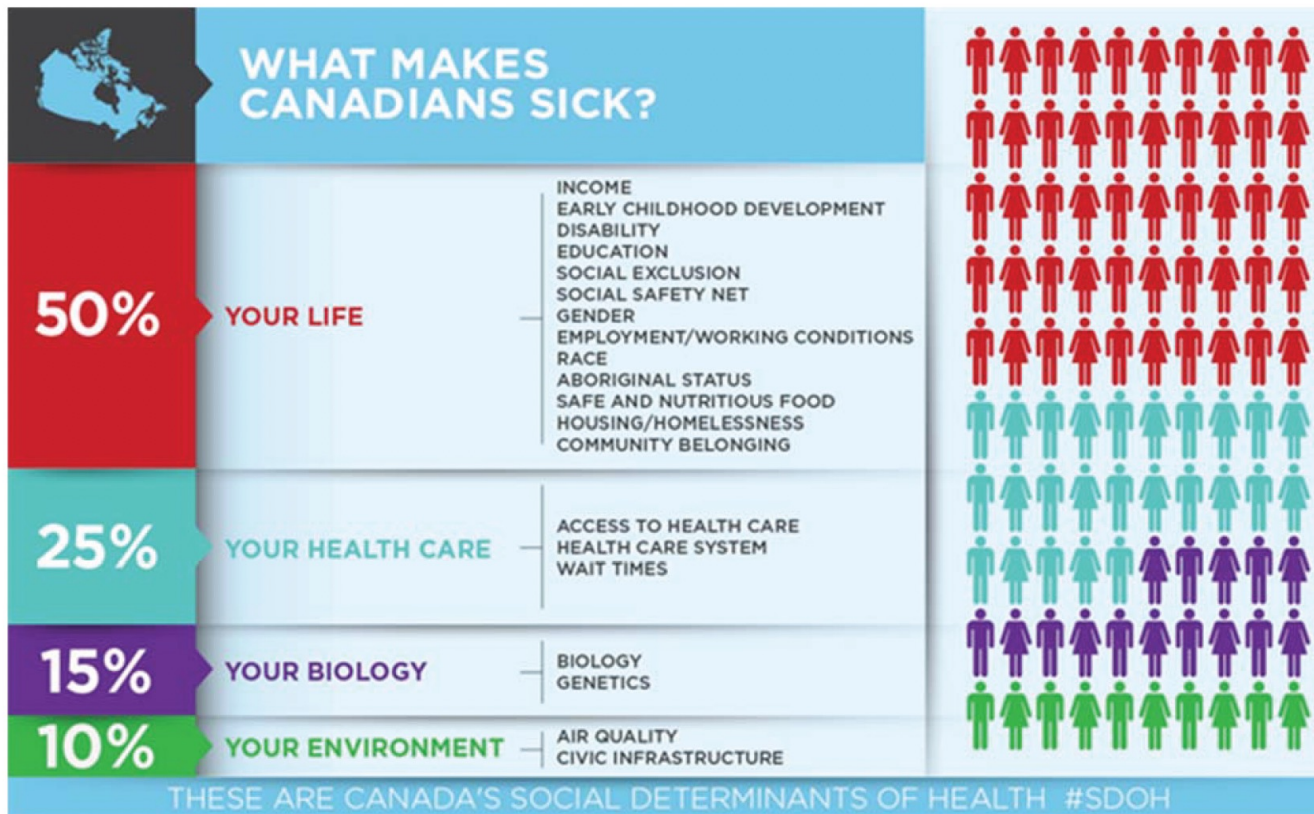
Media outlets

Learning Processed/Learning Cycles



1. Data to Knowledge (Red)
2. Knowledge to Practice (Blue)
3. Practice to Data (Green)

Social Determinants of Health



- Much inequity in health results from inequities in SDHs.

Social Determinants of Health



Social Determinants of Health Implementation Recommendations

Call to Action

Report Cross Reference

2

Integrate the social determinants of health together with a rebalanced health system into all governance, policy, program, and infrastructure decisions that influence health.

Action 6.2

Bridging the Gap

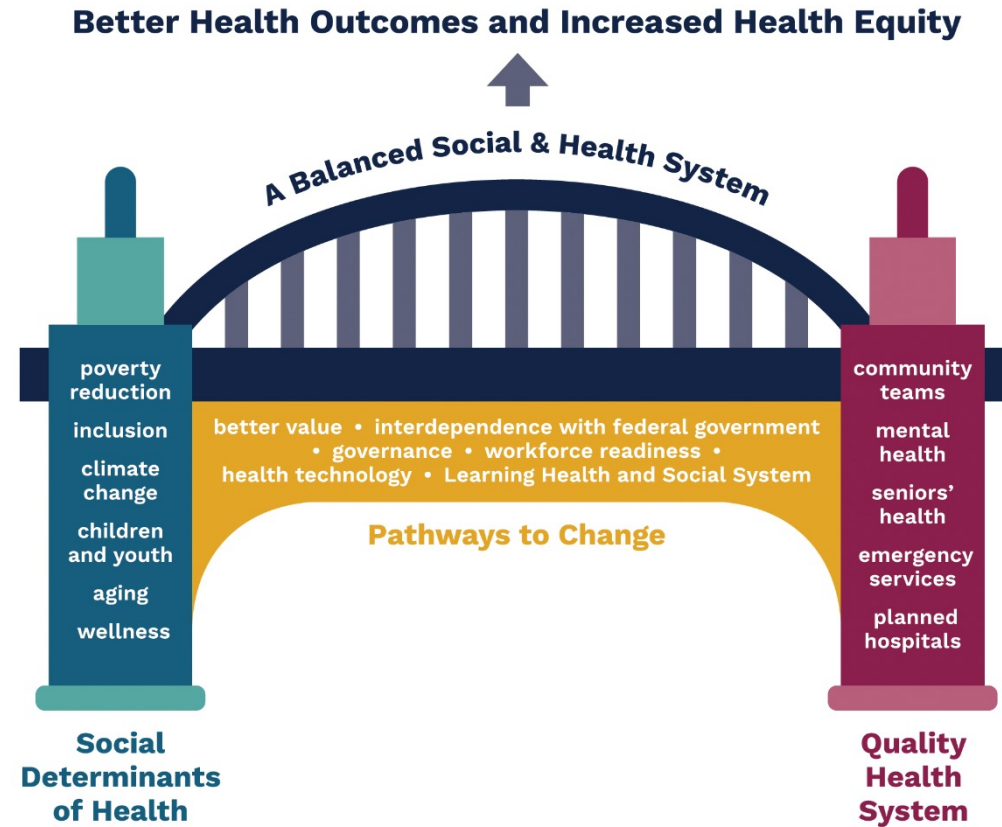


Fig 2. The bridge to better health outcomes and increased health equity

Learning Health & Social System



Direction Statement

A learning health and social system is one in which science, education, informatics, incentives, and culture are aligned for continuous improvement, innovation, and equity. Best practices are seamlessly embedded in the delivery process, individuals and families are active participants in all elements, and new knowledge is generated as an integral by-product.



Key Activities



Leadership

- VP of Quality and Learning Health Systems
 - Quality of Care NL Liaison
 - Choosing Wisely Liaison

Organizational Culture

- Health Transformation Sub-table
 - QCNL/CWNL Rep
 - Report to Premier
 - Patient/Public Representation
- Symposium with major stakeholders

Knowledge Exchange

- Research and Knowledge Exchange Group
- SPOR Community of Practice

Potential Impact- The Quintuple Aim



- Reducing low value care
- Embedding Choosing Wisely principles

Key Challenges



**organizational
culture**

**data systems
and
data sharing**

**funding learning
activities**

**limited supply of
skilled individuals**

**managing
competing priorities**

**regulatory
challenges**

Lessons Learned



Leadership

Organizational
Culture

Knowledge
Exchange