



**University
of Manitoba**



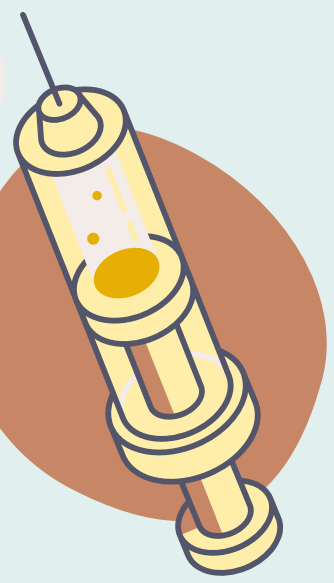
**Choosing
Wisely
Canada**



SuperSTARS: Mobilizing the next Generation

**By: Riddhi Tailor
College of Pharmacy
University of Manitoba**





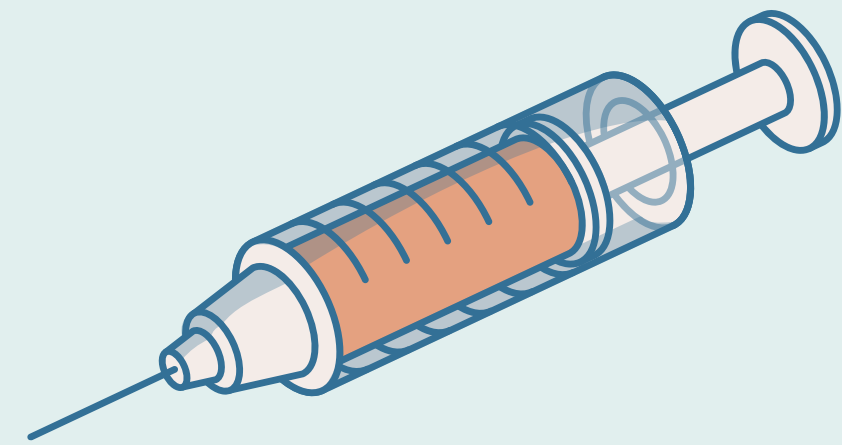
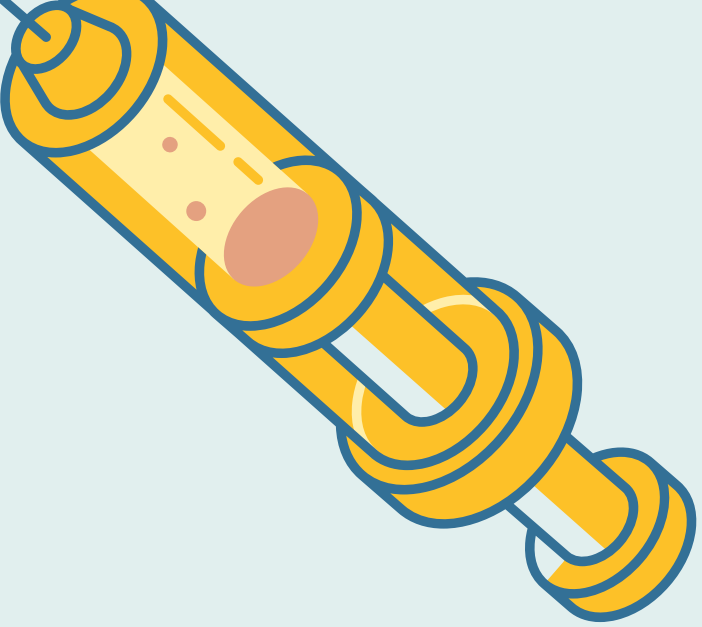
Presenter Disclosure

- **Presenter: Riddhi Tailor**
- **Relationships with financial sponsors:**
 - **Any direct financial relationships including receipt of honoraria:** SuperSTARS Award supported by The Canadian Pharmacists Association (CPhA)
 - **Memberships on advisory board or speakers' bureau:** none
 - **Patents for drugs or devices:** none
 - **Other – financial relationships/investments:** none



Agenda

- **Identifying gaps within the Pharmacy program**
- **The role of the Pharmacist**
- **Student Led initiatives at the University of Manitoba**
- **Interprofessional Collaboration**
- **Future Direction**
- **Questions**





Current Gaps within pharmacy programs

Exposure

**Treatment
centered care**

**Interprofessional
collaborations**

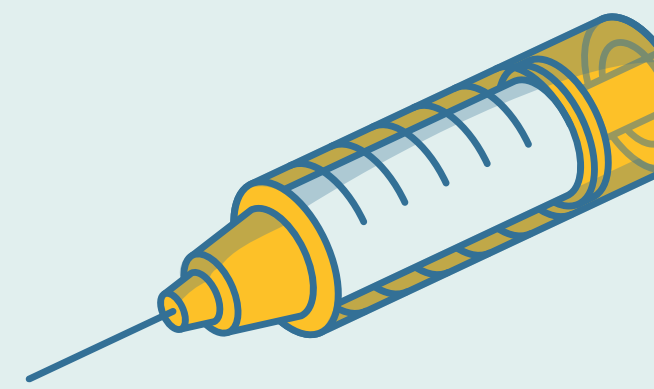


The role of the Pharmacist

- Optimizing Medication Use
- **Deprescribing**
- Supporting Rational Prescribing
- **Antimicrobial stewardship (AMS)**
- Evidence-based recommendations
- Guiding Appropriate Care
- Reducing Healthcare Waste
- **Environmentally conscious medication use**



Lunch and Learns



Antimicrobial Stewardship Lunch & Learn

Medicine X Pharmacy



November 24, 2025
12pm - 1pm
Apotex 264



Guest Speaker: Dr. Terry Wuerz
Pizza provided



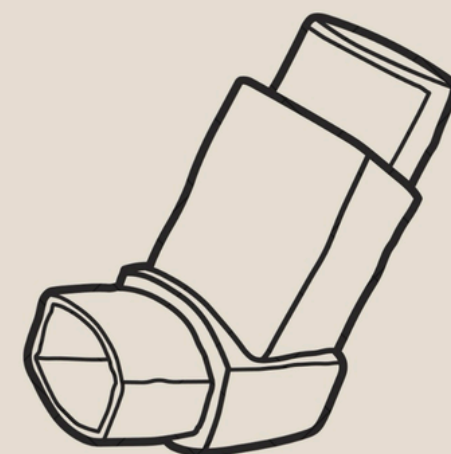
Come learn about the
importance of antimicrobial
resistance and stewardship!

choosing wisely



HELPING PATIENTS,
HEATING THE PLANET?
CHOOSING WISELY IN
A WARMING WORLD

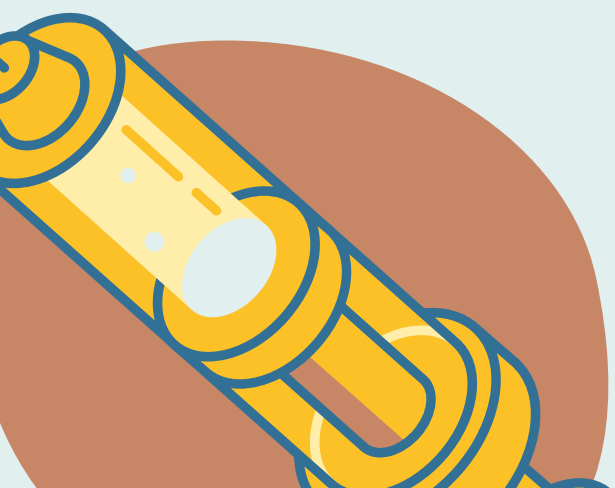
The environmental
impacts of metered
dose inhalers



Dr. Jamie Falk
Associate Professor
College of Pharmacy

March 11th
12:00-1:00pm
Apotex 264
Lunch provided

**Choosing
Wisely
Manitoba**

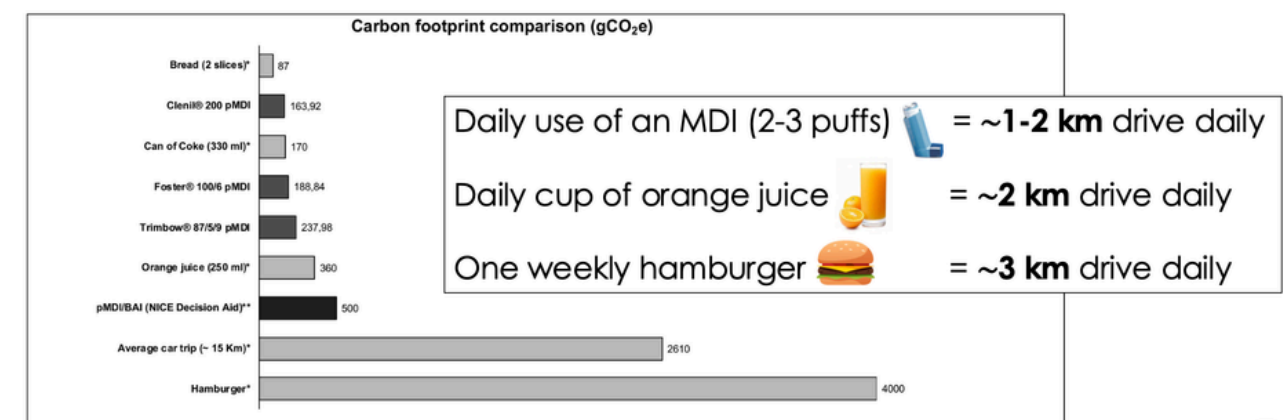


Lunch and Learns



DECISIONS AMID UNCERTAINTY

CONTEXT...



BMJ Open Resp Res 2020;7:e000571

Adapted from: Dr. Jamie Falk Lecture on CWC

Importance of Collaboration

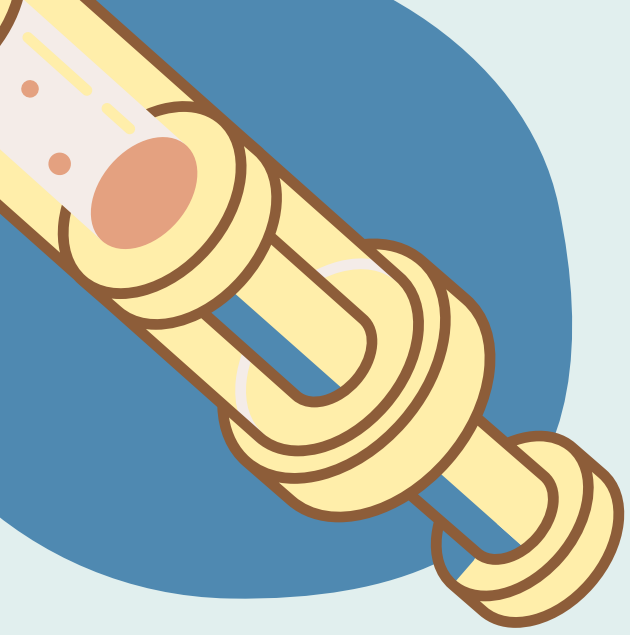


Med students: Kera, Gabirella, and Natan

- **Collaborative decisions**
- **Team based care**
- **Bridging disciplines**
- **Networking**

What can students expect in the near future?

- **Skills lab integration**
 - Choosing Wisley Module
 - Pocket Cards for most common medication classes (thinking about IESA! → Indicated, Effective, Safe, and Adherence)
- **More Lunch and Learns**
- **Trivia Nights**
- **Pill Drives**
- **Early Integration of Interprofessional collaboration**



Questions?

Email: tailorr@myumanitoba.ca



**University
of Manitoba**

**Choosing
Wisely
Canada** ™